

WE'RE IN THE BUSINESS OF DESIGNING BUSINESSES

KLSY is a Manhattan-based boutique interior design firm specializing in commercial spaces. Our mission is to help our clients bring their vision into the physical space by creating playful, thoughtful, and sustainable spaces. With experience in all sectors of commercial space, combined with a balance of artistic vision and technical knowledge, we have the insights and passion to design a space that fits our client's brand and budget.

In addition to serving tenants of all kinds, we have strong partnerships with brokers and agents and assist them with all aspects of marketing and selling their vacant spaces.

▶ [CLICK HERE TO LEARN MORE ABOUT OUR PROCESS](#)



FINANCIAL WORKPLACE, NEW YORK, 2021
CREDITED FIRM: PERKINS EASTMAN

IT'S NOT JUST A DESIGN; IT'S A STORY

Our strategy is not to simply create a beautiful room. It is to translate our client's vision, mission, and values into the physical space. By taking the time to conduct in-depth interviews and discovery with our clients at the beginning of each project, we are able to uncover the project's core story and understand the brand as a whole.



REINVENTING COMMERCIAL

KLSY designs to evoke an emotion. We strive for the "WOW" factor. To inspire, motivate, and move. We aim to challenge the premise that commercial spaces are "all work and no play" by infusing each project with playfulness and authenticity. Every space is met with thoughtful purpose, a passion for thinking outside the box, and an encouragement for our clients to do the same.

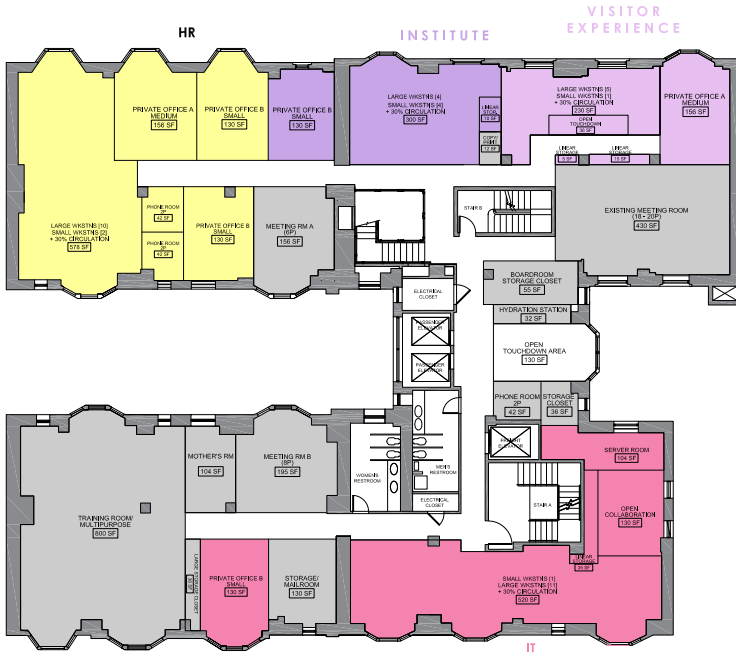
BROKERS & OWNER'S REPS.

New York City's largest brokerages have embraced essential partnerships with commercial interior designers to survey, analyze, render, and design their vacant spaces in hopes of attracting a new era of clientele. KLSY has had the opportunity to be at the forefront of these developments and continues to tap into design and tenant insights to create solid, profitable opportunities for these brokerages.

Integrating design strategies has been proven to increase leaseability for these partners and has even become an expected minimum. A partnership with KLSY from conception is a clear, marketable asset that assures potential tenants guidance through a future build or space strategy.



LANDLORD PRE-BUILT, NEW YORK, 2022
CREDITED FIRM: SOGI



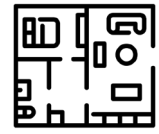
NON-PROFIT WORKPLACE PROGRAMMING, NEW YORK, 2020
CREDITED FIRM: PERKINS EASTMAN

TAILORED SERVICES

After assessing our client's needs, we create a custom services package to include the services that are both necessary for the success of the project and will deliver the best ROI.



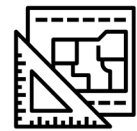
INTERIOR DESIGN



PLANNING & PROGRAMMING



3D RENDERINGS



SURVEYS & FLOOR PLANS

FOUNDER & CREATIVE DIRECTOR

Kelsey Omeis, NCIDQ, LEED GA

Kelsey Omeis is an NCIDQ and LEED accredited interior designer. Her exuberant personality separates her from her peers, but it is her willingness to take design risks mixed with the technical knowledge to achieve it is what has really propelled her career. Although her specialty lies in corporate workplace design, Kelsey has experience designing for projects spanning all industry sectors, including hospitality, healthcare, and education.

Her time spent at some of New York City's largest and most well-renowned firms has given her a well-rounded skillset. In addition to project work, she is extremely involved in the New York City design scene and has previously been a volunteer for IIDA. Kelsey received both her Bachelors and Masters degrees of Interior Architecture and Design from Drexel University.

▶ [CLICK HERE TO LEARN MORE ABOUT OUR FOUNDER](#)

2022 KIMBALL EVERYSPEACE COMPETITION
GRAND PRIZE WINNER



TRUSTED BY TOP-TIER CLIENTS

Our diverse array of experience has allowed us to work with noteworthy clients, as well as gain knowledge in all areas of the industry; from design to project management, for both clients and brokers.

